

# **Eglin Installation Growth Committee**

**Sherry Campbell**

Chairman: Board of County Commissioners

Chairman: Executive Committee, Eglin

Installation Growth Committee

# Introduction

- Okaloosa County Florida is the recipient of financial assistance in the amount of \$212,850 from the Department of Defense (DoD), Office of Economic Adjustment (OEA) to help the local community with the initial phase of development of a Growth Management Plan (GMP) for Okaloosa, Santa Rosa and Walton Counties.

# Growth Management Plan (GMP)

- A community adjustment strategy that outlines a strategic approach to growth.
  - It will help the participants gain an understanding of the likely effects of growth.
  - It will be a vision for the future. Funding will enable the participants to define a clear direction for the future with goals and objectives.

# Goals and Objectives

- Primary goal of the GMP
  - Lay ground work for a regional comprehensive plan for sustainable growth.
  - Develop a fiscally sound implementation program that addresses the regional impact of changes planned at Eglin AFB.
- Intent of the plan
  - Assess current conditions.
  - Identify and prioritize short term and long term needs.
  - Identify challenges and potential resources.

# Grant Assistance

- Initial phase - request for operating funds to competitively hire a Growth Management Coordinator (GMC).
  - The GMC will...
    - Report to the Eglin Installation Growth Committee (EIGC)
    - Work on behalf of the affected counties and cities.
    - Be responsible for preparing a Scope of Work (SOW), facilitating communication and overseeing the coordination for the GMP.
  - The GMC will be hired by November 30, 2006 for an 18 month period if this request is approved.
  - Okaloosa County will provide the 10% non-Federal (cash) match of \$23,650 for the contract salary of the GMC.
  
- Second Phase - submit a GMP SOW requesting funding to contract a growth planning consultant.
  - The consultant will ...
    - Develop a tri-county assessment of current conditions, anticipated future impacts and needs.
    - Identify and prioritize actions to accommodate the anticipated growth.
    - Address intergovernmental coordination.

# Planning Strategy

- Provide growth impact planning documents and coordination strategies that can be used by local agencies for implementation of various planning and zoning actions, capital improvements, regional coordination, communications and monitoring.
- Identify and analyze impacts related to anticipated new growth and changes at Eglin AFB.
- May overlap into addressing some of the growth that has taken place around the base over past several years.

# Program Products and Benefits

- The GMP will be a coordinated effort between the county, neighboring jurisdictions and the military.
- Avoid conflicts between Eglin's mission and the counties' desired growth patterns and quality of life.
- Coordinate and support arriving military personnel in need of transportation, affordable housing, education, public services and facilities.

# Public Participation and Education

- All EIGC meetings will be advertised and open to the public.
- Public participation will be solicited through a series of workshops.
  - Workshops will serve as public education forums where the community will review data regarding the organization and purpose of the plan.
  - Subsequent workshops will provide the community an opportunity to convey additional input.

# Timeline

28-Nov-06	EIGC meets to approve baseline needs report
12-Dec-06	BOCC awards bid for EIGC project management
15-Jan-07	Subcommittees baseline need list report presented to Air Force by Growth Management Staff
4-Feb-07	EIGC Project Manager submits Scope of Work to OEA for approval and funding of Phase II

# COMMITTEE INFORMATION

## Eglin Installation Growth Committee

Sherry Campbell	Okaloosa County Rep
Colonel D. Clemons	Eglin AFB Rep
Dr. James Richburg	Education Rep
Paul Thorpe	State/Local Agencies Rep
Lois Hoyt	Citizens Advisory Rep
Don Salter	Santa Rosa County Rep
Mike Anderson	League of Cities Rep
Larry Sassano	Economic Development Council Rep
Gordon Fornell	DSI/BRAC Rep
Danielle Slaterpryce	Transportation Rep
Scott Brannon	Walton County Rep
Wayne Harris	Joint Chamber of Commerce Rep

- **Transportation Committee**

Danielle Slaterpryce	Chairman
John LuLue	Vice Chairman
Christy Johnson	Secretary

- **Education Committee**

Tommy Kranz	Chairman
Dr. Rogacki	Vice Chairman
Dr. Goetsch	Secretary

- **Environmental Concerns Committee**

Larry O'Donnell	Chairman
Paul Thorpe	Vice Chairman
Theresa Norris, P.E.	Secretary
Sam Wilson	

- **Utilities Committee**

Sandy Sims	Chairman
J. E. Gene Smith	Vice Chairman
Joey Crews, P.E.	Secretary

- **Public Health Committee**

Karen Chapman	Chairman
Bill Head	Vice Chairman
Colonel Rennie	Secretary

- **Housing Committee**

Ellen M. Holt	Chairman
Peggy Fowler	Vice Chairman
Ed Dunbar	Secretary

- **Citizens Advisory Committee**

Lois Hoyt	Chairman
Kathy Foster	Vice Chairman
Steve Czonstka	Secretary

- **Planning Committee**

Jason Autry, P.E.	Chairman
Jim Bagby	Vice Chairman
Lani Burritt	Secretary

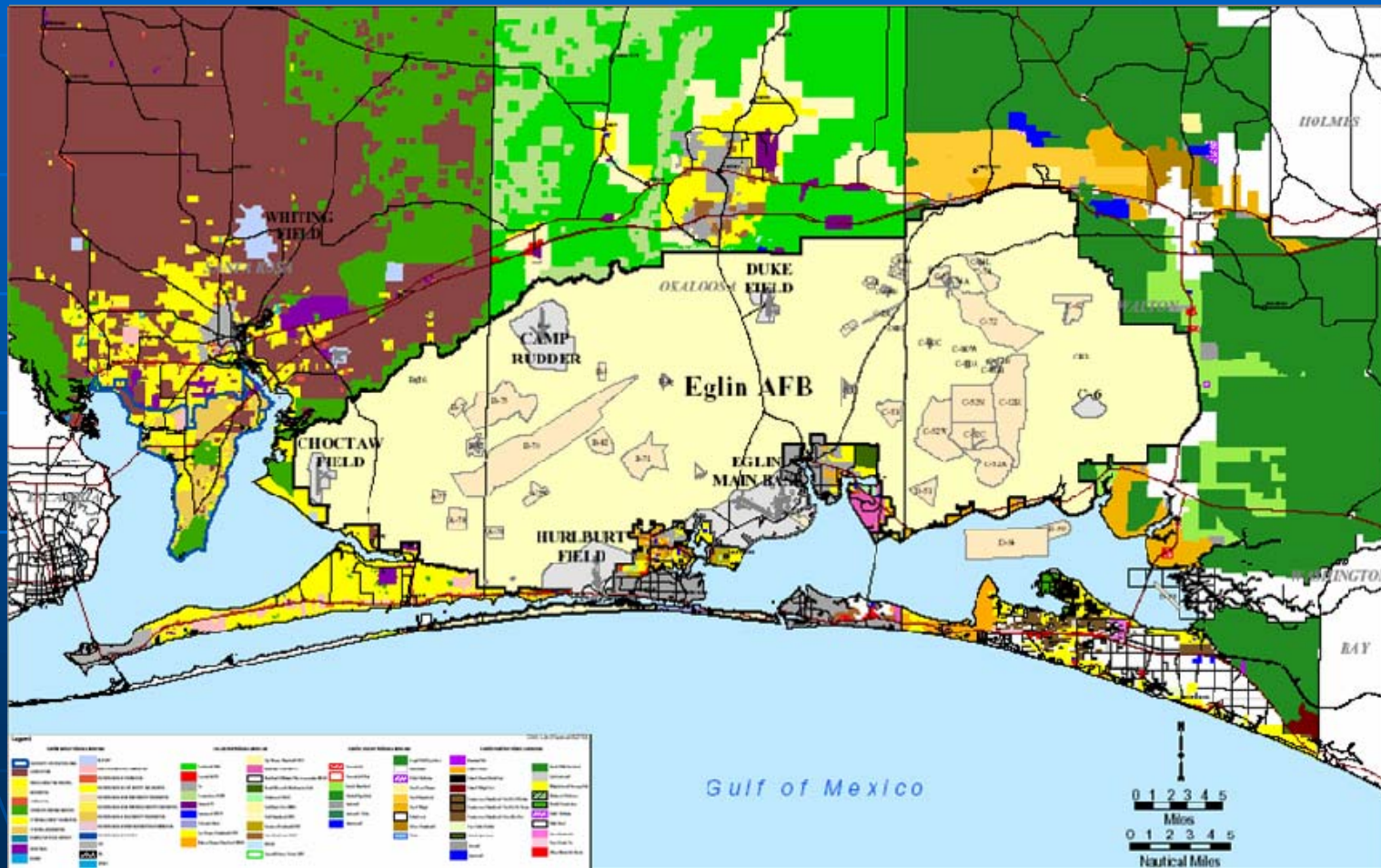
- **Economic Development Council**

Larry Sassano	Chairman
Darryl Jones	Vice Chairman
Kay Rasmussen	Secretary

- **Law Enforcement and Public Safety**

Mike Coup	Chairman
Chris Simpson	Vice Chairman
Beth Blankenship	Secretary

# Eglin Installation Growth Area



# Thank You

Sherry Campbell

Chairman: Board of County  
Commissioners

Chairman: Executive Committee, Eglin  
Installation Growth Committee